

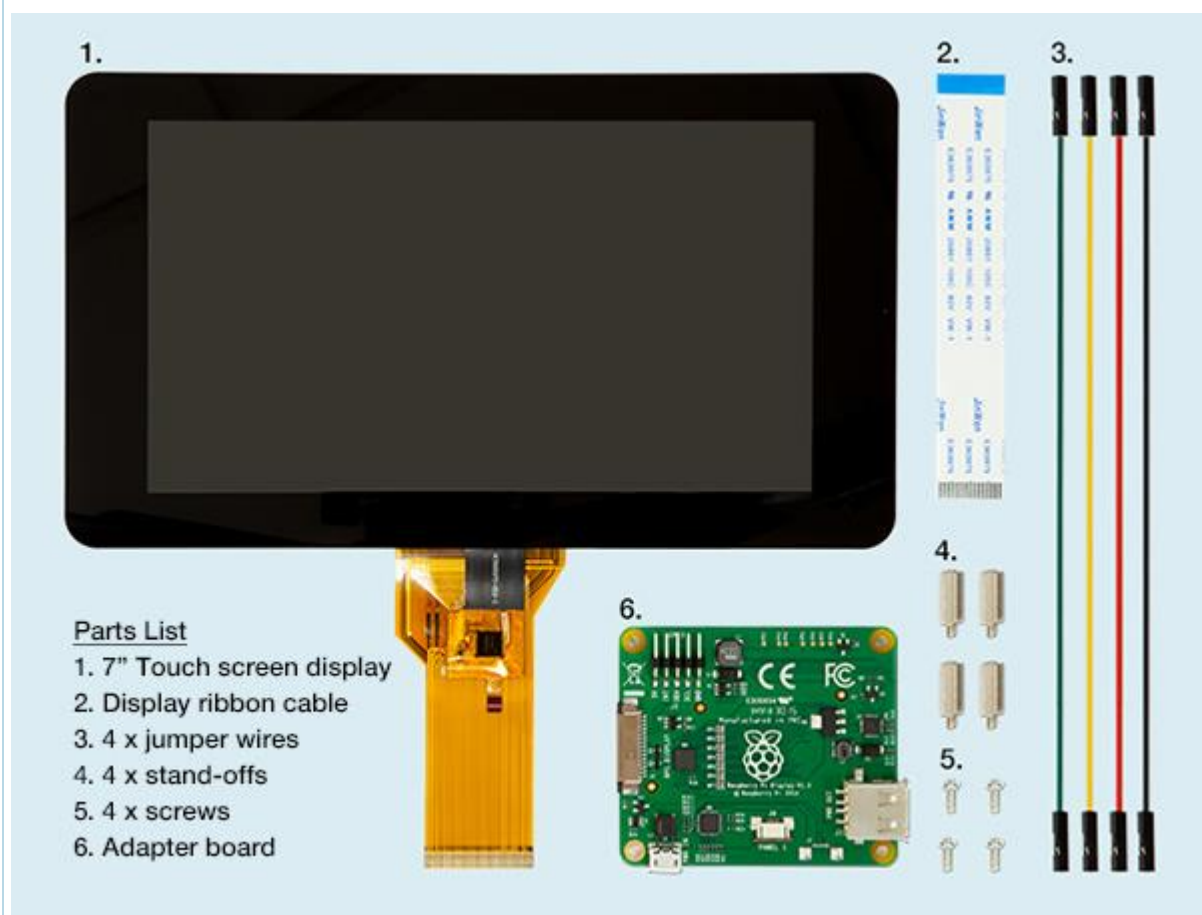
Raspberry Pi 7" Touchscreen Display Installation Guide

Created by [joeman](#) on Aug 11, 2015 1:55 PM. Last modified by [pchan](#) on Mar 4, 2016 3:45 PM.

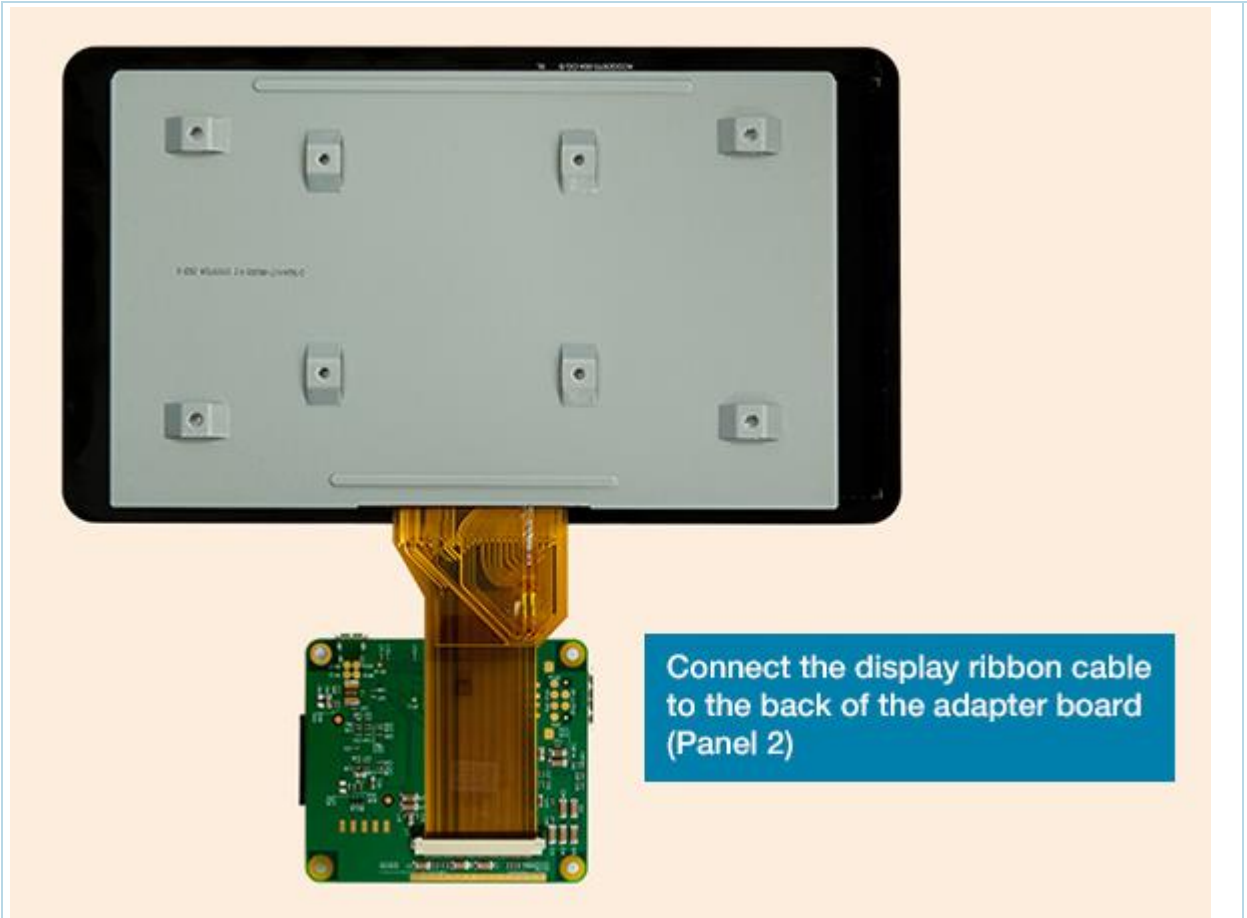
Operating System Support

In order to be sure you're running the latest version of Raspbian, connect your Raspberry Pi to the Internet and then open LX Terminal. Type **'sudo apt-get update'** to download the latest version of the OS. Once that's complete, type **'sudo apt-get upgrade'** to apply the download to your Raspberry Pi. That way you'll have all of the latest drivers and software needed to support the touch screen display.

Step 1

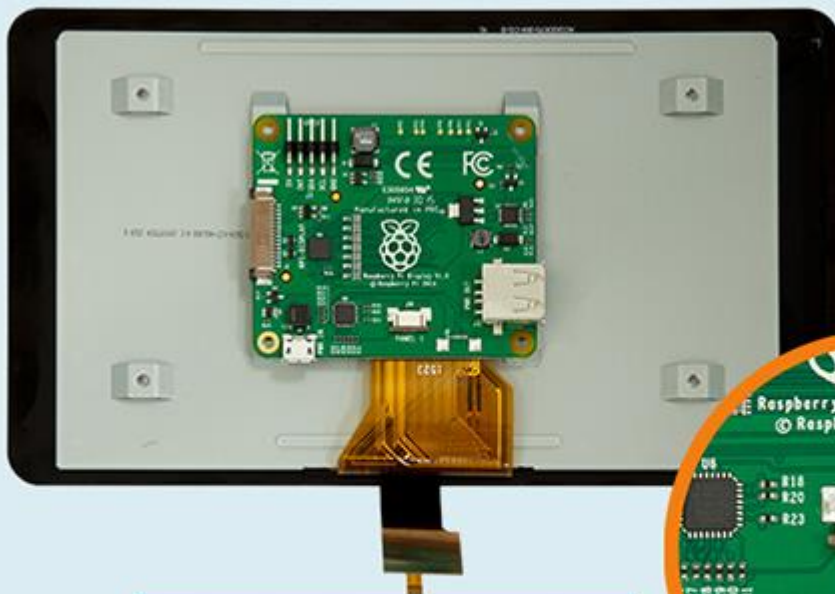


Step 2



Connect the display ribbon cable to the back of the adapter board (Panel 2)

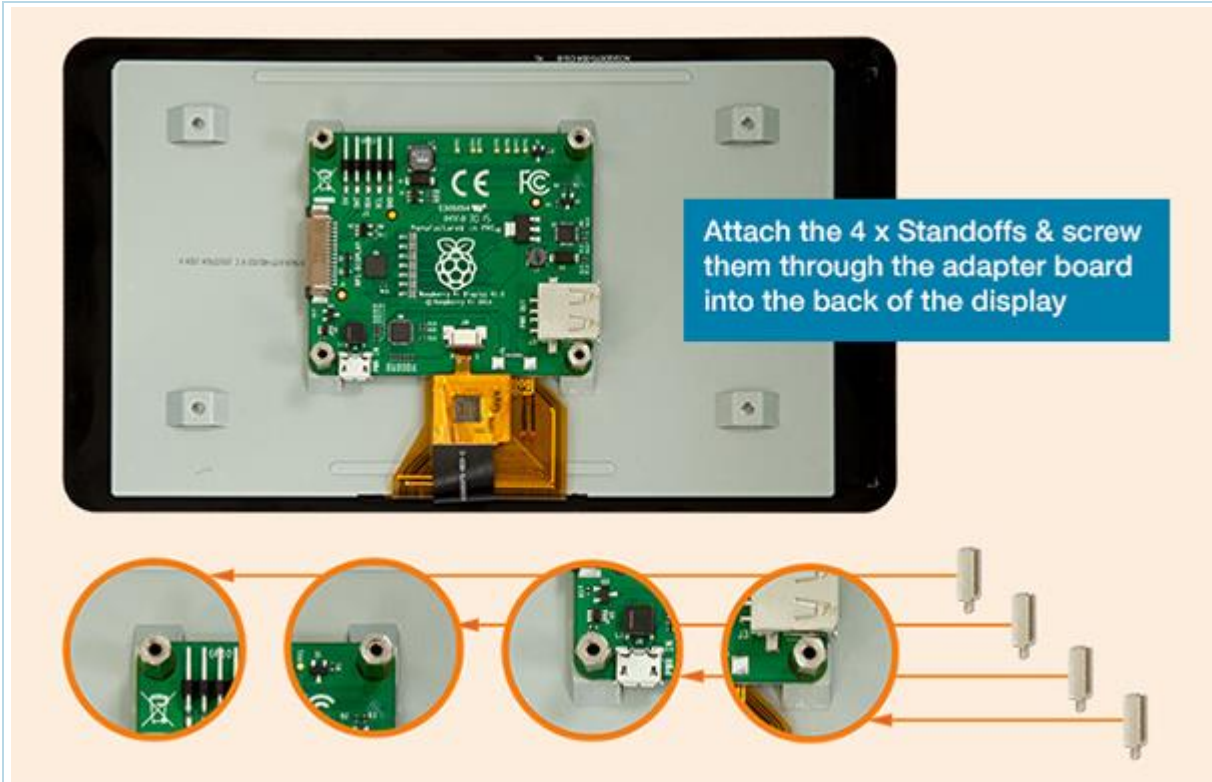
Step 3



Lie the adapter board onto the back of the display then connect the touch screen ribbon cable into J4 (Panel 1)



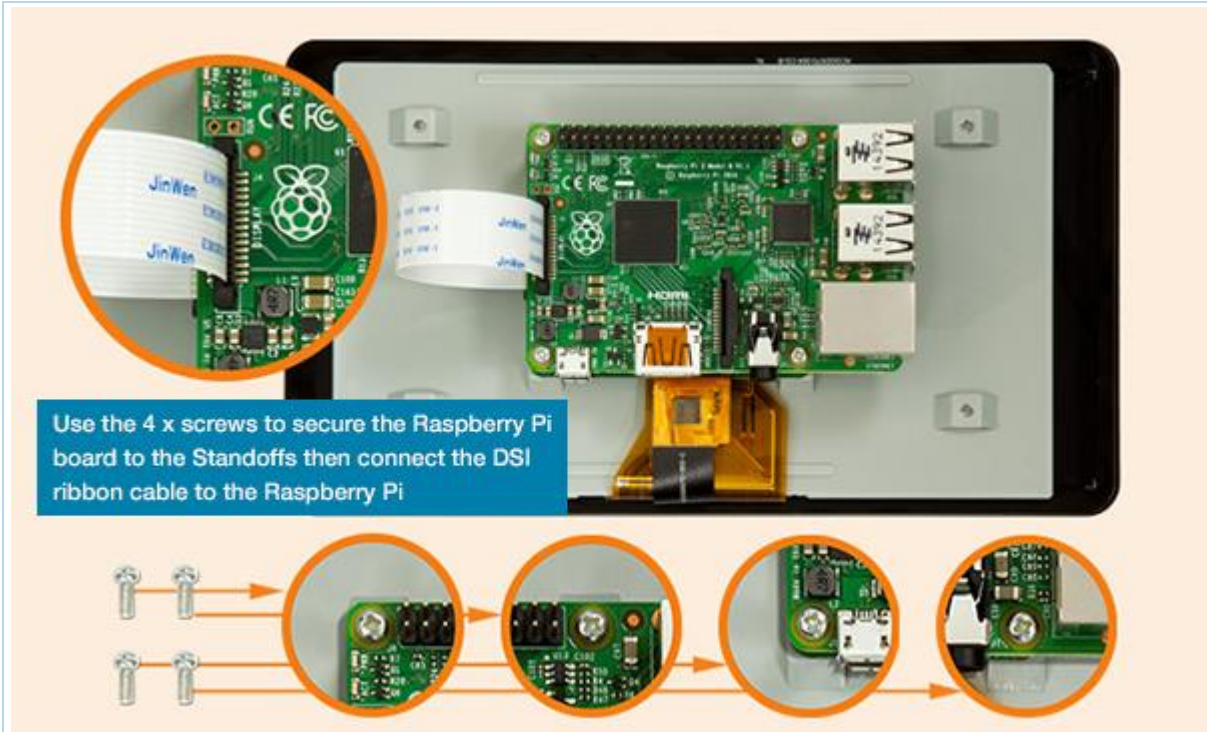
Step 4



Step 5



Step 6



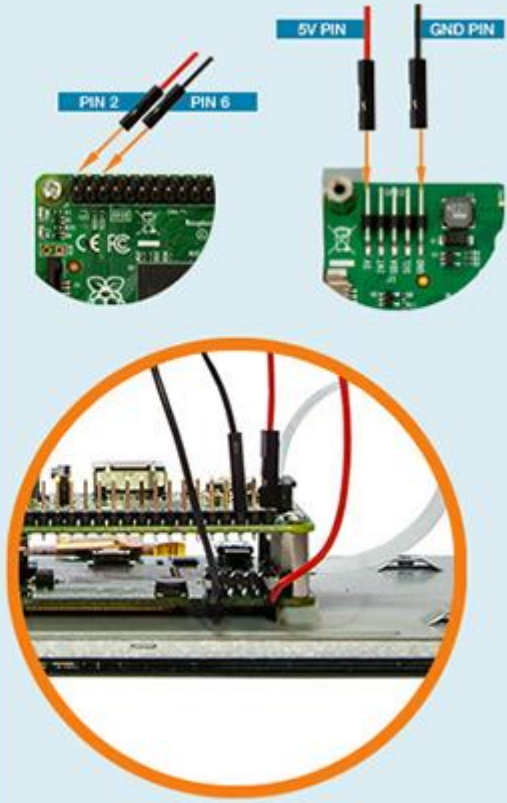
Step 7

Connect the jumper wires from the Raspberry Pi to the adapter board

Raspberry Pi2 GPIO Header

Pin#	NAME	NAME	Pin#
01	3.3v DC Power	DC Power 5v	02
03	GPIO:2 (SDA1 , PC)	DC Power 5v	04
05	GPIO:3 (SCL1 , PC)	Ground	06
07	GPIO:4 (GPIO_CLK)	(TXD0) GPIO14	08
09	Ground	(RXD0) GPIO15	10
11	GPIO17 (GPIO_GEN0)	(GPIO_GEN1) GPIO18	12
13	GPIO27 (GPIO_GEN2)	Ground	14
15	GPIO22 (GPIO_GEN3)	(GPIO_GEN4) GPIO23	16
17	3.3v DC Power	(GPIO_GEN5) GPIO24	18
19	GPIO10 (SPI_MOSI)	Ground	20
21	GPIO:9 (SPI_MISO)	(GPIO_GEN6) GPIO25	22
23	GPIO11 (SPI_CLK)	(SPI_CE0_N) GPIO:8	24
25	Ground	(SPI_CE1_N) GPIO:7	26
27	ID_SD (PC ID EEPROM)	(PC ID EEPROM) ID_SC	28
29	GPIO:5	Ground	30
31	GPIO:6	GPIO12	32
33	GPIO13	Ground	34
35	GPIO19	GPIO16	36
37	GPIO26	GPIO20	38
39	Ground	GPIO21	40

Rev 1
26/07/14
<http://www.element14.com>



Step 8



Insert a Micro SD Card into the Raspberry Pi with the Latest version of Raspbian installed then attach a 2Amp Power Supply to the Raspberry Pi Adapter Board to power the display and Raspberry Pi Board.

Alternative methods of powering the Touchscreen Display
Connect a MicroUSB cable from the 'PWR OUT' port on the adapter board to the 'PWR IN' MicroUSB port on the Raspberry Pi board. Then connect a 2Amp external power supply to the 'PWR IN' port on the adapter board
Or

Power both boards independently using separate 2Amp external power suppliers connected to the 'PWR IN' ports on both the Raspberry Pi board and the adapter board

Step 9

Operating Software:

Now that you've assembled your Raspberry Pi Touchscreen Display, you will need to download and install the latest version of the Raspbian Operating System - available to download from the Raspberry Pi Foundation at: <https://www.raspberrypi.org/downloads/>

Once installed, type
`sudo apt-get update`
and
`sudo apt-get upgrade`

(in that order) to install all of the latest drivers and software to support the Touchscreen Display.

